
Tiina Huhtaniemi

Kuusi mittens



Kuusi mittens have been worked on fairisle by using Brooklyn Tweed's Shelter. You can easily adjust the size by changing needle size or yarn.

Copyright Tiina Huhtaniemi. Questions about pattern: info@titityy.fi For personal use only.

Materiaalit: Brooklyn Tweed Shelter, main color Snowbound ~ 45 g and contrast color Sap ~ 20 g

Needles (3,5) 4 mm for ribbing and (4) 4,5 mm for hand

Gauge (24) 21 sts x (27) 23 rows / 10 x 10 cm in fairisle

Finished measurements ~ (16,5) 21 cm circumference, (23,5) 26 cm length

↓↓

These mittens are worked in round with circular needles using magic loop technique. To make sure that your fairisle won't be too tight between the needles, make extra yo using your contrasting color, and on the next rnd drop it - you won't knit that!

When there's color repeat longer than 5 sts, I do following: I don't twist the yarn, but on that rnd I leave the extra yarn behind the work normally. On the following rnd I pick it up and knit together with main color. I do this every 4-5 sts, and change the place, so that contrast color won't show on right side of the work.

Ribbing

Rnd 1: (k3, p2), (-) repeat to end of the rnd.

Rnd 2: (k1, p1, k1, p2), (-) repeat to end of the rnd.

Repeat rnds 1 -2 as instructed.

Pattern

Using your main color and smaller needles CO 40 sts. Work ribbing for 7 cm. Change to larger needles and knit one rnd with main color, adding 4 sts: (k10, lisää M1), repeat (-) 3 more times, = 44 sts.

Start fairisle. Work chart A on needle 1 and chart B on needle 2. Repeat this for totally 10 rnds. Then continue chart A on needle 1 and work thumb place on needle 2.

Thumb placement, right hand: knit first 8 sts on scrap yarn. Slip then these sts back to needle 2 and continue with chart B.

Thumb placement, left hand: continue working according chart B on needle 2 until 8 sts left, take your scrap yarn and knit those stitches with the scrap yarn. Then slip these sts back on left needle and continue with chart B to end of the needle.

Continue fairisle until end of chart A. Cut contrast color yarn. If you need more length, knit more rnds now with your main colors before starting the decreases.

Decreases

Rnd 1: (k1, ssk, k until 3 sts left on needle 1, k2tog, k1), repeat (-) on needle 2.

Rnd 2: k to end without decreases.

Repeat rnds 1-2 until 8 sts left: ssk, k2tog, ssk, k2tog. Cut yarn and weave in ends. Work the other mitten same, but place the thumb for other hand.

Thumb

Place the sts from scrap yarn on the needle. Pick up one sts from each end (18 sts in total). With main color knit in the round until your thumb is covered. Then decrease as follows:

Rnd 1: (k2tog, k1), repeat (-) to end of rnd, = 12 sts.

Rnd 2: k2tog to the end of rnd, = 6 sts. Cut yarn and pull through remaining sts. Weave in ends.

Abbreviations

CO cast on

k knit

k2tog knit two sts together

p purl

rnd(s) round(s)

ssk slip, slip, knit these two stitches together

st(s) stitch(es)



CHART A

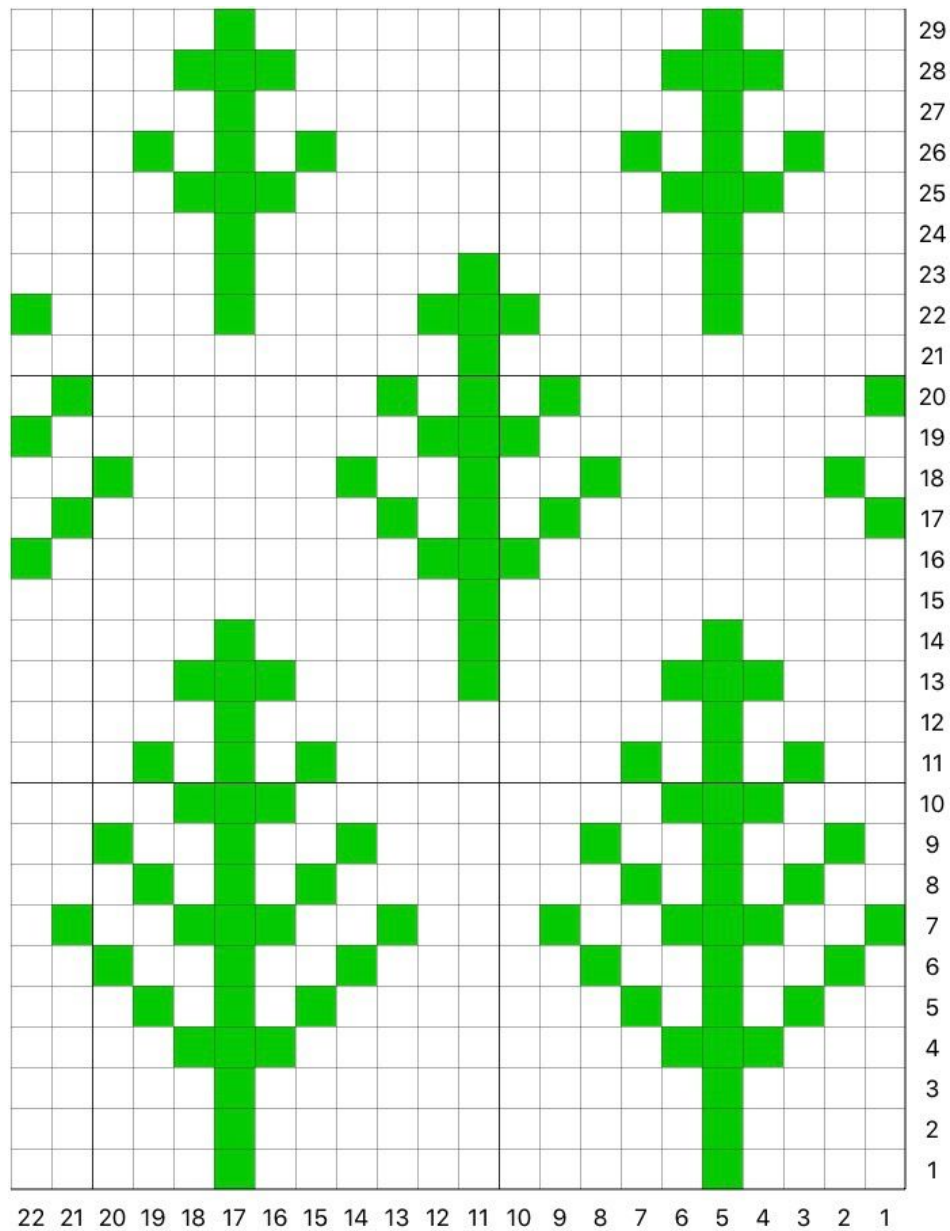
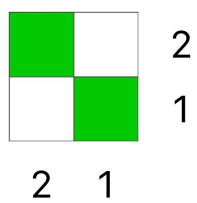


CHART B



white box = main color
green box = contrast color